



TCE MONITOR



REMOTE MONITORS

DESIGNED FOR

INDUSTRIAL APPLICATIONS

An early warning 'fail-safe' system that extends the lifecycle of parts through efficient maintenance monitoring, reducing YOUR carbon footprint, optimising operation time, tackling sustainable development.

WHY CHOOSE TCE MONITOR?

- Low-cost installation and monthly data charges
- 24-hour monitoring of automatic lubricators, signalling-systems, bearings, gearboxes and motors
- Receive instant push-notifications to laptop and phone
- Cellular technology - no loss of data due to power outages or poor Wi-Fi connection
- Oversee and observe systems countrywide on a single dashboard
- Adjustable time interval reporting - 15mins, 30mins or 60mins
- PM check completion is logged by utilising QR code scanning situated on the Monitor
- Reduce downtime costs - knowing exactly where and when problems occur
- TCE Monitor can have up to 8 different sensors- maximising problem/ error detection
- Rated IP66/67 to withstand monitoring allocated in all environmental conditions



0121 369 3659



Invoice Address:
219 Burton Road, Derby, DE23 6AE



info@tcet.co.uk



autolubricatorshop.co.uk
tcet.co.uk



autolubricatorshop.co.uk

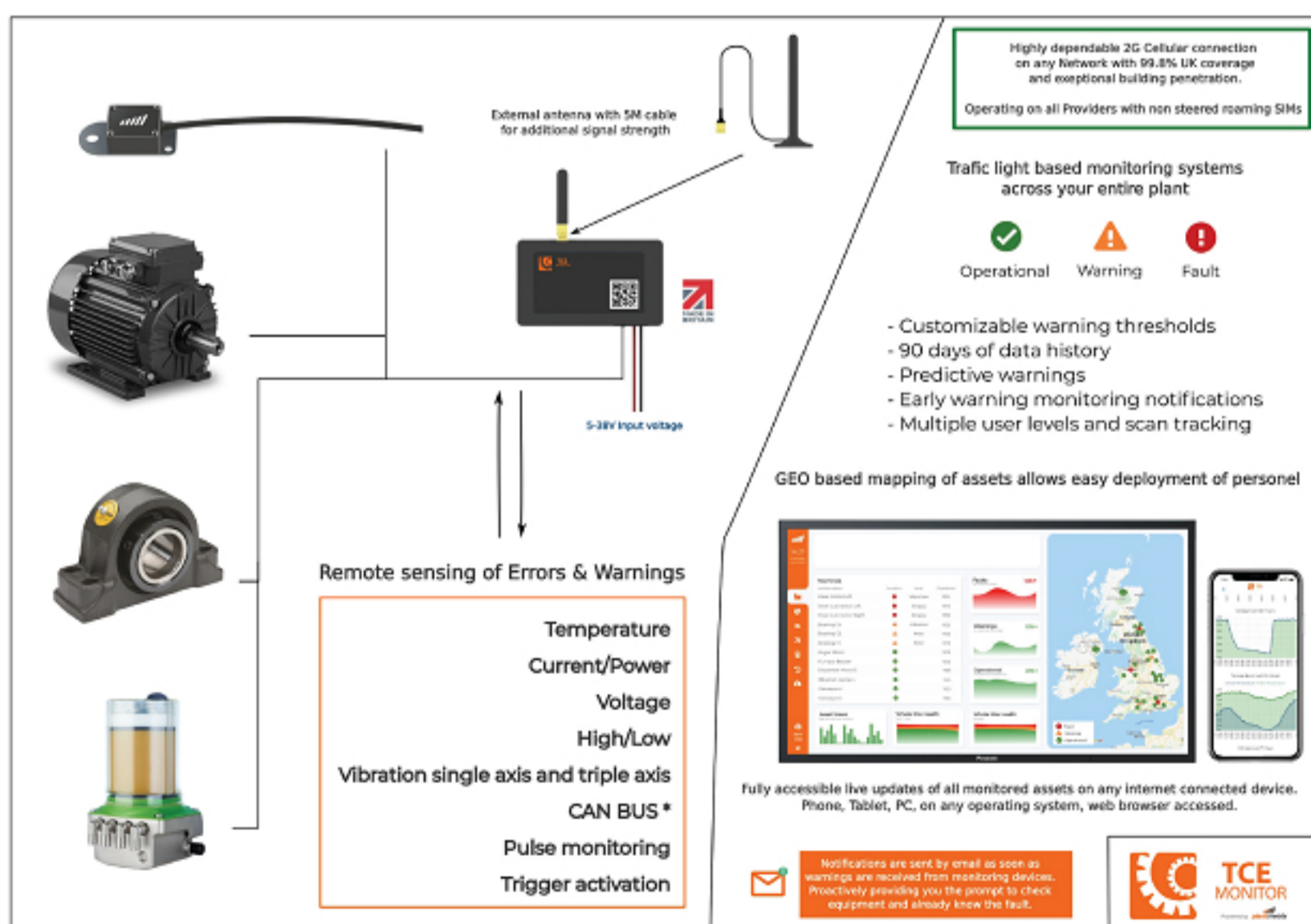
tcet.co.uk

0121 369 3659

FUNCTION

How does it work?

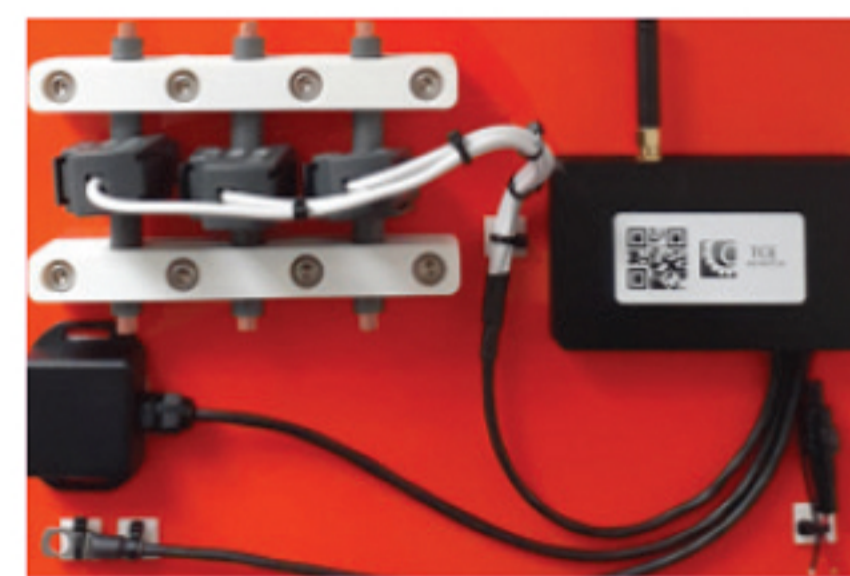
- Powered by 5-38V input Voltage
- Sensors are directly connected to the application.
- Data is transferred to the monitor to measure & record the characteristics at set intervals. Data is converted into graphical trends, displaying equipment performance & predicted life cycle.
- When parameters are set, optimum performance can be used to trigger early warning systems (when data anomalies occur), thus indicating that action is required. Major faults are signaled by a sizable relative difference in data & this is relayed as a push notification alert.
- Data can be accessed on the control panel portal via Smartphone, PC or any device that has an internet connection.
- QR codes are located on the monitor's exterior to allow easy inclusion in PM schedules.



MONITOR RANGE

8 sensors can be connected to a single TCE Monitor control unit per application

The picture to the right shows TCE Monitor fitted to our auto-lubricators. This will show functionality & report if any of the following errors occur; Back pressure too high/ blockage, Power problem and Low lubricant level. This type of monitor can alternatively be integrated to any appropriate signaling systems on plant eg. a level switch, PLC etc.



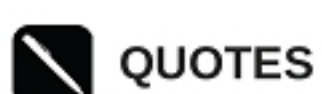
To the left there is an example monitors fitted to an electric motor. Two sensors for heat and vibration are fitted to the motor casing, the other to three phases of the motor input measuring power consumption. Parameters are set using manufacturers recommendations &/or customer guidance, to indicate warnings when the motor experiences abnormal levels of temperature, vibration or the units shows high levels of power consumption (or all 3 individually or together). This information is relayed to the portal dashboard & in turn graphical data plotted to the time interval chosen. This monitor can also be used on pumps & motor gearboxes etc.

ACCESSORIES

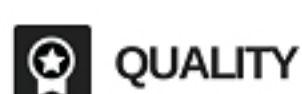
- Sensors: Lubrication, Temperature, Power, Vibration, Voltage, AC Current, DC Current, Pressure - Barometric and fluid
- IP66/67 rated case for environmental protection
- Low cost monthly data charge

INSTALLATION

Installation of all products is available through our experienced professional engineers



Quotes can be produced post-inspection of the application



Customer care - installed systems are checked for full functionality



Our Engineers are available to install systems